

CC985S-2



EU STAGE V - ENGINE

Crane Capacity: 4.9t x 2.1m
Max. Lifting Height: 16.5m
Pick & Carry Duty: 2000kg
Machine Weight: 9510kg



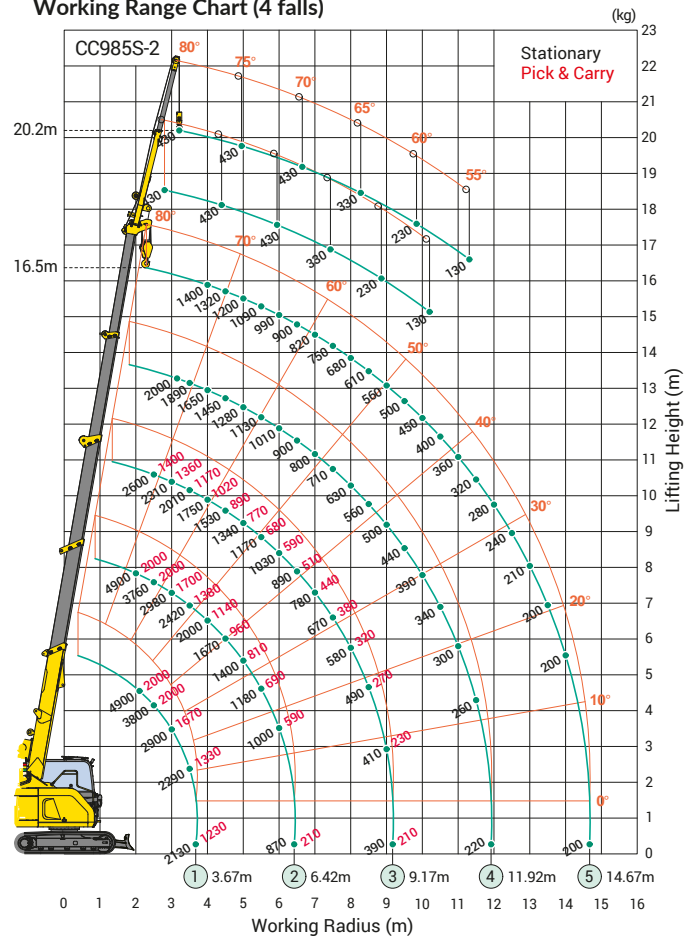
CC985S-2



Specifications

Model		CC985S-2		
Crane capacity		4.9t x 2.1m		
Max. working radius		14.67m x 0.20t		
Max. lifting height		16.5m (20.2m with fly jib)		
Max. reach below ground		-25.0m (4 falls) / -50.0m (2 falls) / -100.0m (1 fall)		
Pick & Carry capacity		2.0t		
Machine Weight		9,510kg (9,910kg w/blade, 9,690kg w/fly jib, 10,090kg w/blade & fly jib)		
Machine Weight with rubber pads		9,790kg (10,190kg w/blade, 9,970kg w/fly jib, 10,370kg w/blade & fly jib)		
Overall length x width x height		5,190mm x 2,320mm x 2,730mm		
Overall length x width x height (with rubber pads)		5,220mm x 2,320mm x 2,760mm		
Crawler width		450mm		
Tail swing		1,390mm		
Winch system	Number of wire falls for Hook		4 falls / 2 falls	
	Hook speed	Low	29.0m/min (4 layers, 4 falls)	
		High	38.0m/min (4 layers, 4 falls)	
Hoist wire rope		IWRC 6 x Fi(29) φ 10mm x 115m		
Telescopic system	Boom type			Fully automatic 5-section pentagonal telescopic boom
	Boom length		4.78m - 7.53m - 10.28m - 13.03m - 15.78m	
	Boom telescoping stroke / time		11.0m / 24sec	
Boom hoist system		Hoist angle / time		-2 ~ 80degree / 13sec
Slew system		Slew angle / time		360deg / 2.1rpm
Drive system	Travel speed	Low	Forward & backward 0~2.1km/h	
		High	Forward & backward 0~3.4km/h	
	Gradability		20deg	
Ground pressure with rubber pads		47.8kPa (0.49kgf/cm ²) [50.6kPa (0.52kgf/cm ²) w/blade & fly jib]		
Model		ISUZU 4LE2XB.JB		
Emission level		EU Stage V		
Engine	Displacement		2.179L (2,179cc)	
	Rated output		44.6kW / 2,000min ⁻¹ (60.6PS / 2,000rpm)	
	Fuel / Fuel tank capacity		Diesel / 140.0L	
Safety device		Hydraulic safety valve, Overwind protection, Level, Safety lock lever, Tilt alarm, EMO switch, Moment limiter, LED working status lamp, Rear view camera, Data logger		
Optional equipment		Rubber pads (weight 280kg), Single fall hook, Blade, Fly jib (430kg capacity), Searcher hook (2,000kg capacity)		

Working Range Chart (4 falls)



Dimensions

